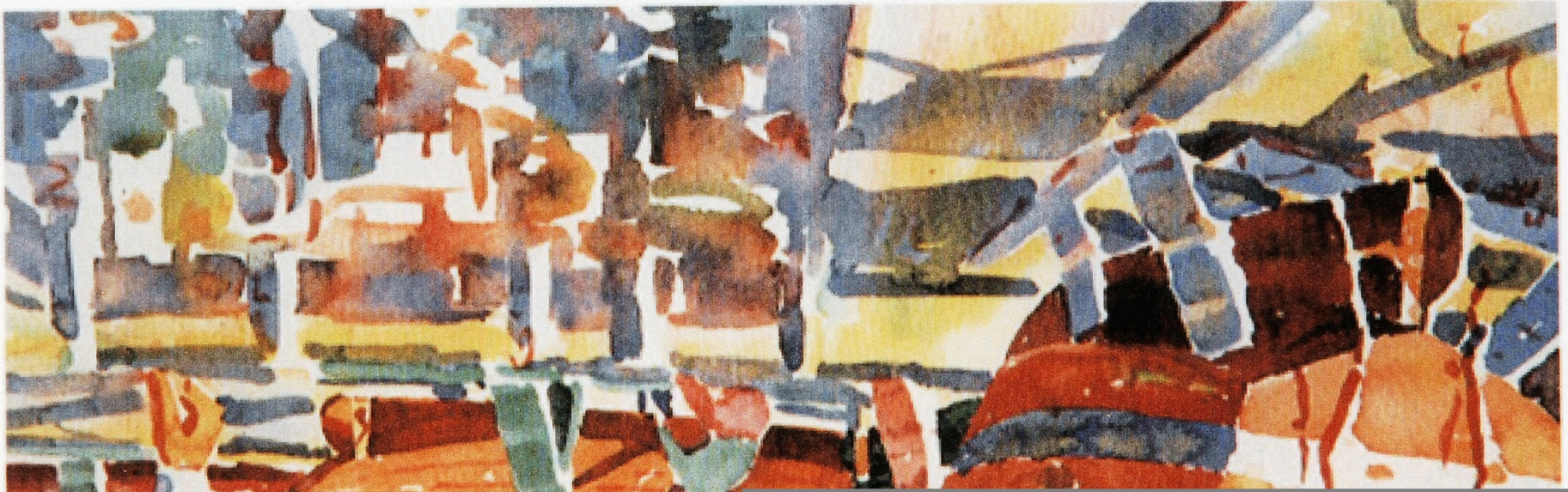




# HIND AL SOUFI PORTFOLIO

ARTWORKS & EDUCATIONAL PROJECTS

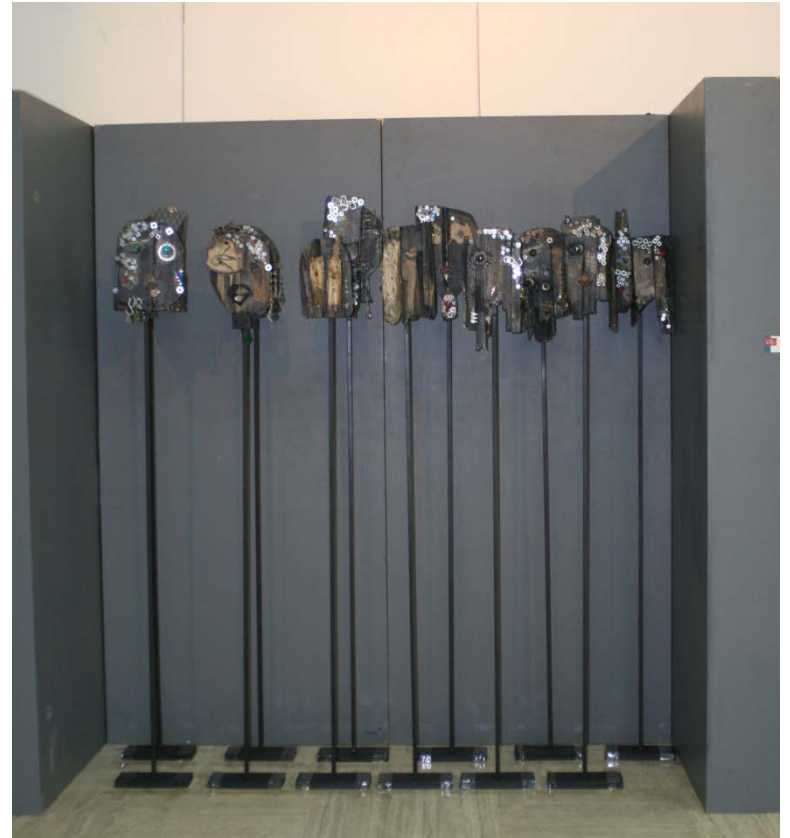
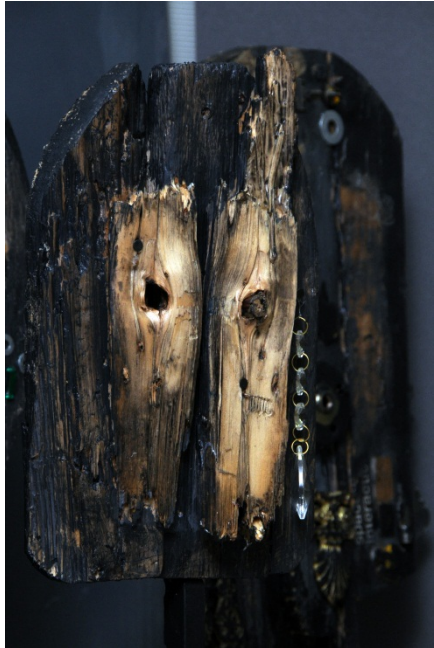


# I. INSTALLATION WORK •

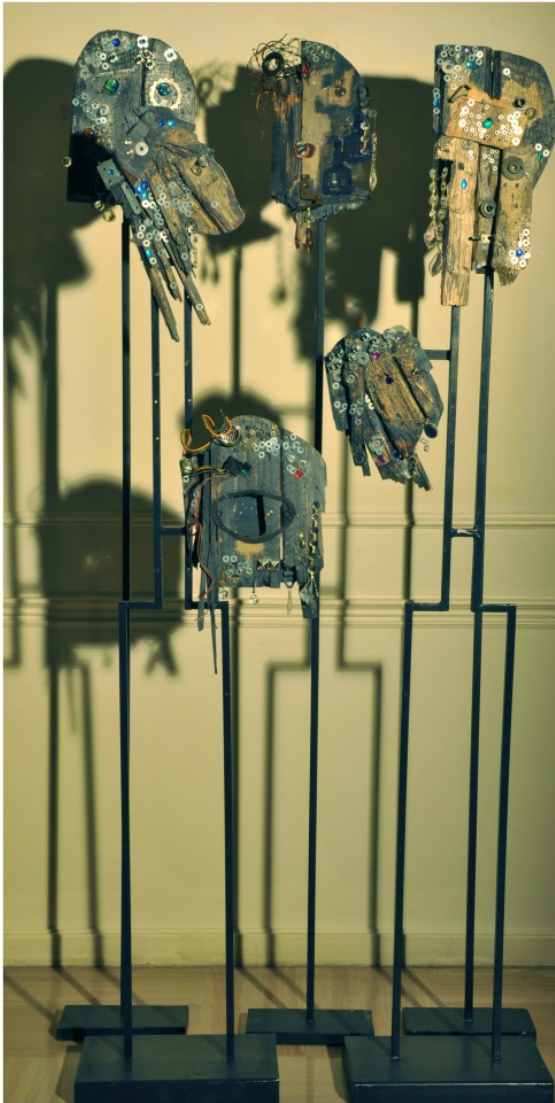
3 Elements, wood and found objects & Crystal, 2011 •



Shabbiha, 12 Elements, wood  
and found objects & Crystal, 2012



SHABBIHA 2.12 Elements. wood and found objects, 2012





**Spring Family, 3 elements,  
Wood, Iron, Found Objects,  
2012**



**Exile, 12 Elements, wood and found objects, 2013**



**Who are we, Metal from the clash cars, toys, Acrylic, H:2m, 2013, Museum of Macam, Award from the Ministry of Culture...**



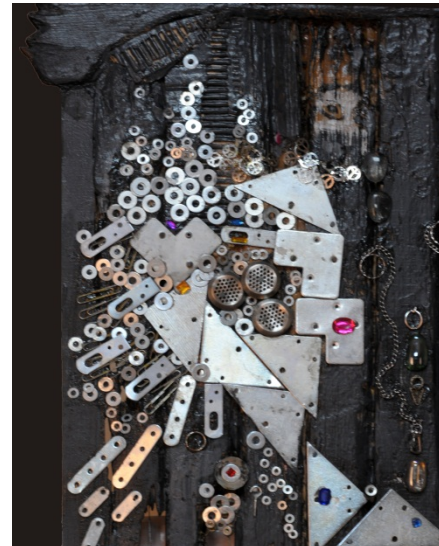
Inside each one lives a killer, a killer who plans, executes or even does not know he is a killer...

I gathered all what the killer left behind him and around, I added some toys of the children... Those children who desperately will be a project of a new killer...

**Spring may come back, 12 Elements, wood and found objects, 2014**



# Assemblage, wood and found objects, 2008

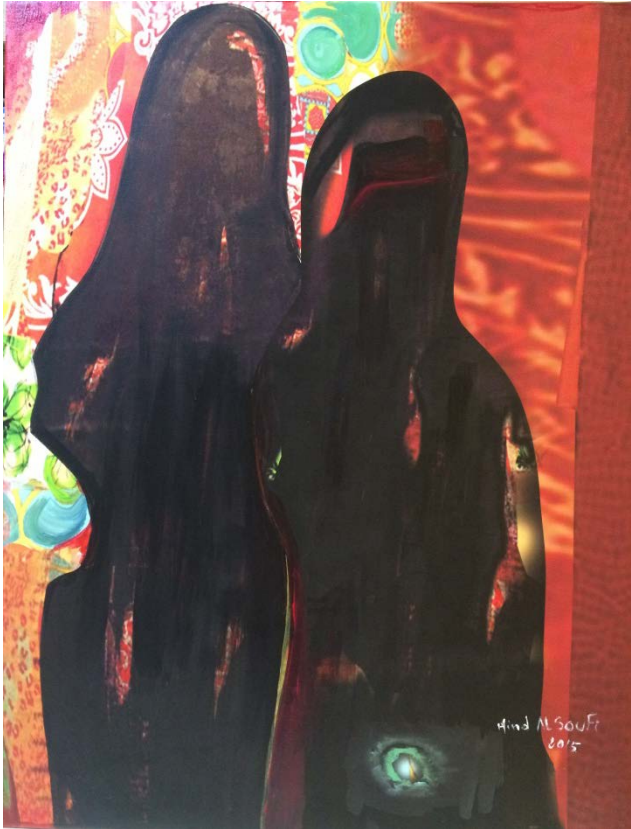




## Assemblages, Steel and found objects, from 2003-2013



**Niqab Installation, SILENT DIALOGUE, 6 Elements, Fabrics and found objects, 2014**



## 2. PAINTINGS

### NIQAB, Silent Dialogue, Digital Work, 2014



**CLASH**, 120x80, Acrylic on Canvas, 2008

**DECONSTRUCTION 3**, digital image, layers, 2004

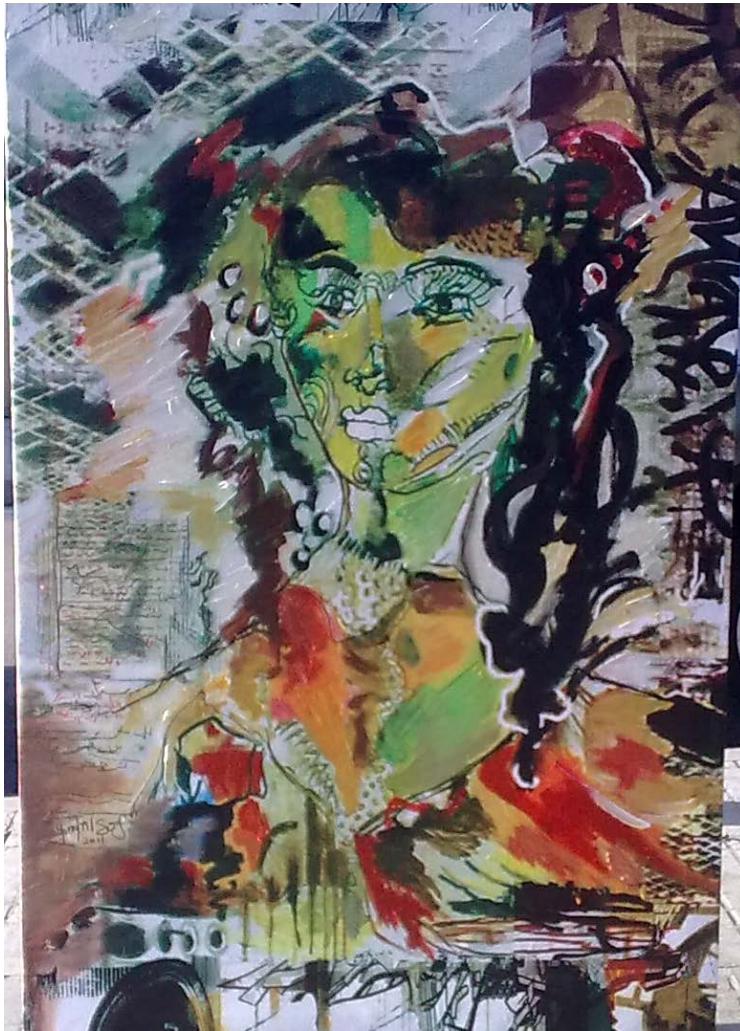


## DECONSTRUCTION I & II, Digital, 2002, 2003.

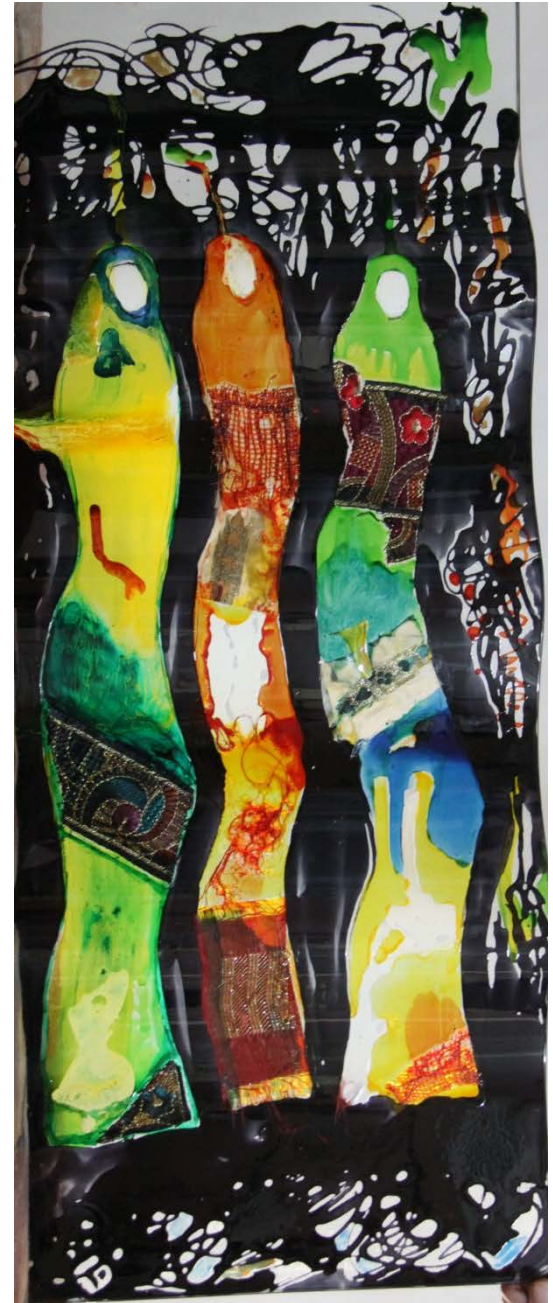


**Spring Woman, 120x80,  
Acrylic & layers, 2013**

**REBELS, 80x40cm,  
Fusion and  
Colors, 2014.**



I curved the round form using a new material that does not burn, I put a flat glass on it in the oven... I wanted to experiment coloring on a non-flat surface of fused glass, with bumps and curves, I wanted to see the drips on the shapes of the cast ... I added colorful fabric from my Grandmother remains... How vivid those female bodies rounded by years, fragmented by violence all around, deformed, distorted... Brave women who survive, keeping rebels and enslaved at the same time...



**TRIBUTE TO SHAFIC ABOUD, 40x30, Acrylic on Canvas, 2007**



**BAYBARS, 80x65, Collage  
And Colors, 2017.**

**MODERN MINIATURE, Art  
to rediscover.**



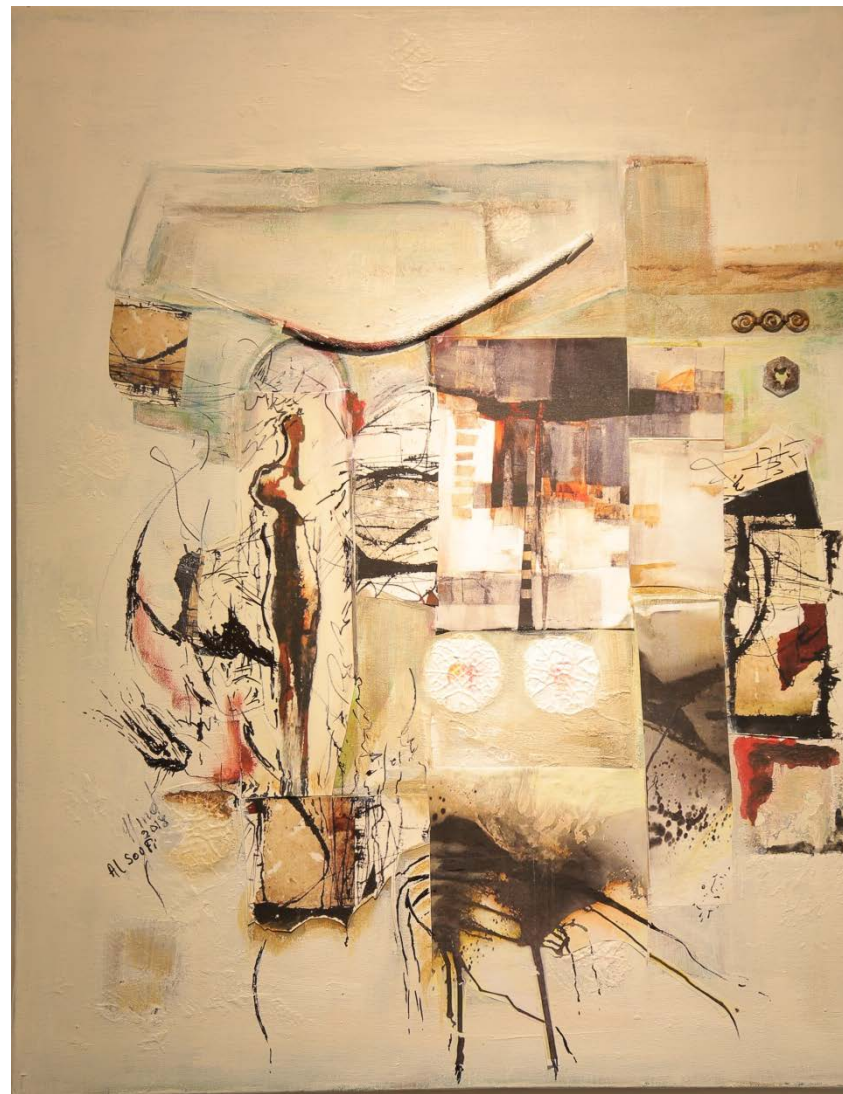
**INTIFADA, 120x80, Acrylic on Canvas, 1999.**

**Anxiety, 50x30, , 1980**



**UNTITLED, 120x125, Acrylic on Canvas & Collage, 2018.**

**UNTITLED, 50x70, Acrylic & Collage, 2018.**



# 3. MURALS with Students Help

Achkal Alwan, 5.80x 4.00m, Acrylic & Wheels collage, 2009



**TRIPOLI THROUGH YOUTH EYES, 3.20x2m, Ceramics & found Objects, 2017.**



**HARETNA**, Ceramics, 2,80x 2m, 2003, Old City.



**TRIPOLI THE GIVER, Acrylic, 25x 4.20m, 2005.**  
**SCHOOL THEME ON BEES, Acrylic, 12x3,40m, 2003 .**



**Design for a Nursery, Acrylic, 8x5m, 2002, Al Mina Nursery.**



# 4.LAND ART

**CITY FOR LIFE, 1600k of various lemon trees, 16x8,5m, 2014, International Fair.**



**Celebrating Leb Fruits, 2400k, 20x 9,50m, 2015, City University.**



*Hind Al Soufi*  
2015

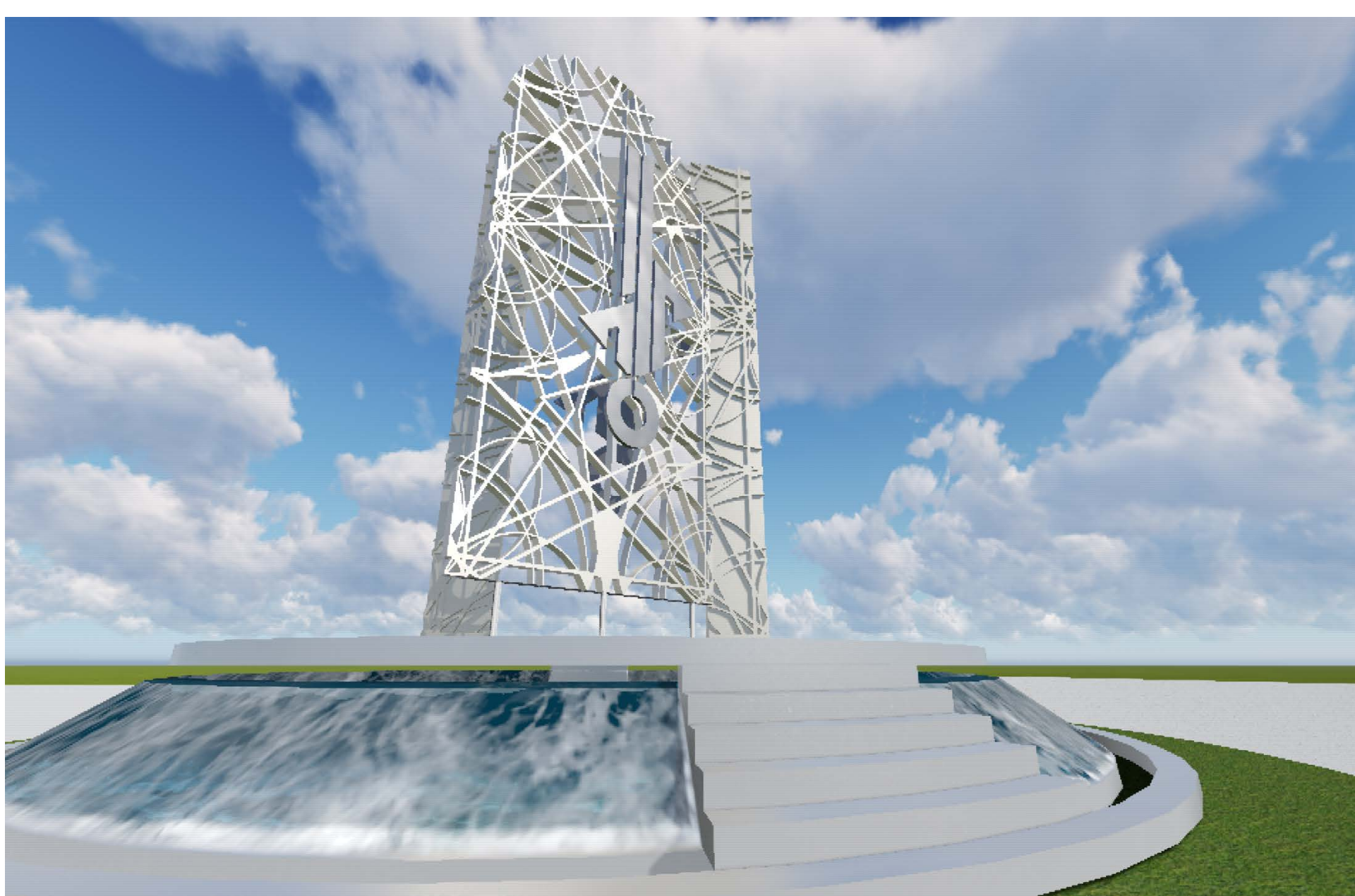
# 5.PUBLIC ART

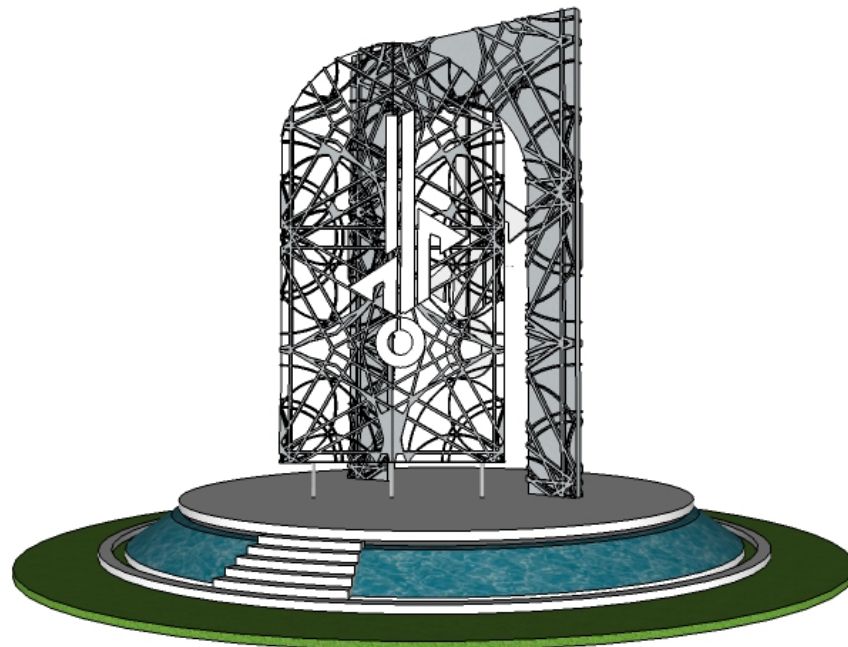
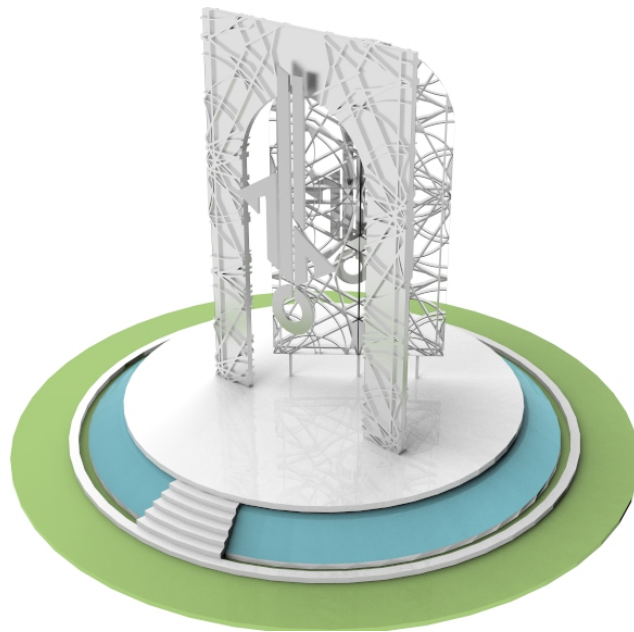
**FANOOS**, Stainless steel & Led, 13x7m, 2016.



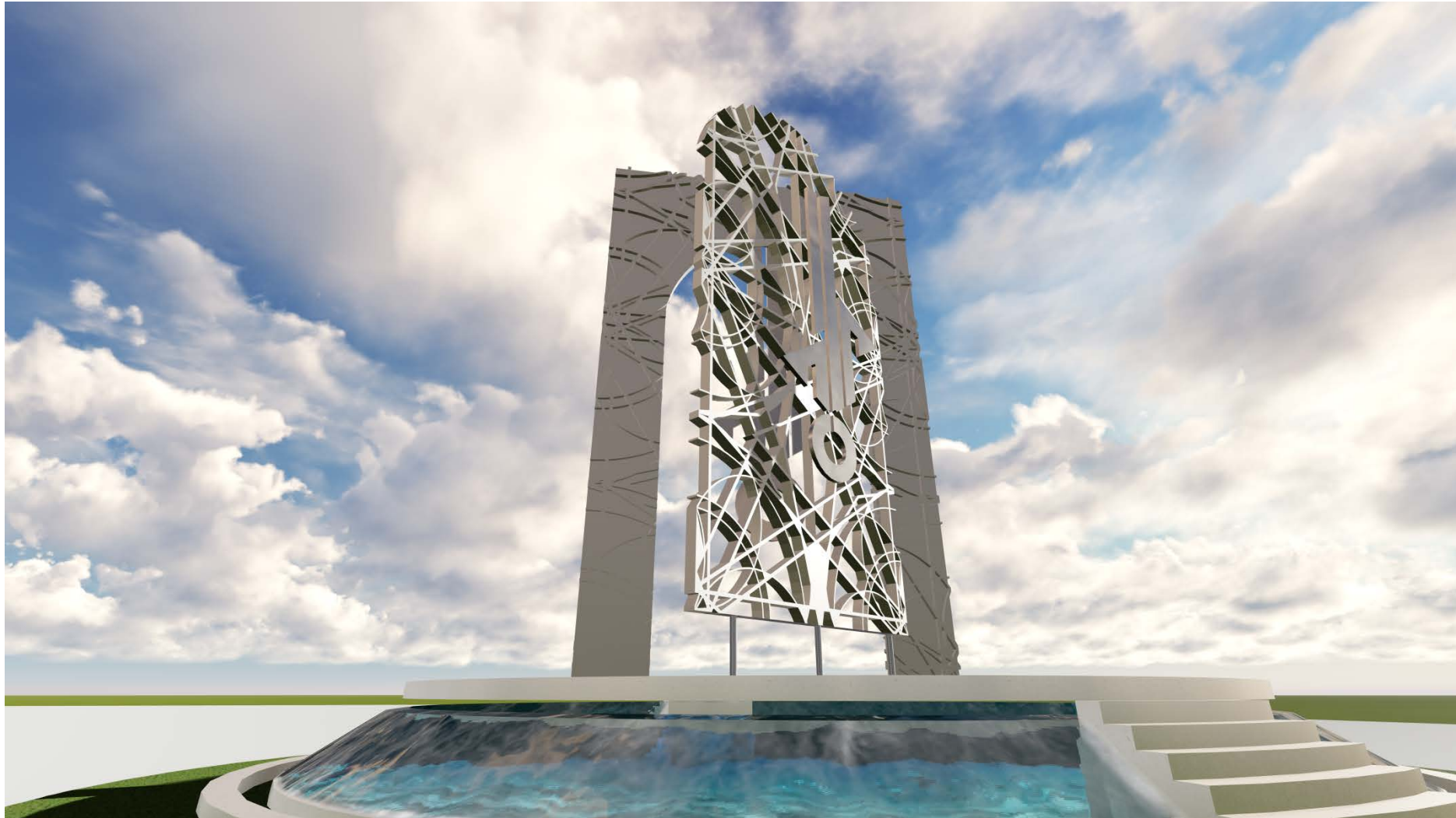
**THE PORTAL OF THE CITY, Stainless, 13mx7m, 2017.**  
Project for Al Nour Square-Tripoli







# THE LIGHT PORTAL OF THE CITY



# 6. ENVIRONMENTAL ART

**Celebration of the Bikaton Day, Wheels, 13x7.4, 2014.**



# Forms from Remains: CDs & Plastic remains...

2.5x2.80m

3x2.90m



Forms from Remains: Chairs: 5m x 2.8m CDs  
& Plastic Bottle covers 1.80 x 0.55m



